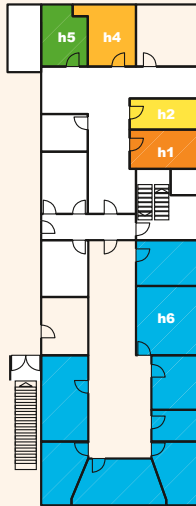
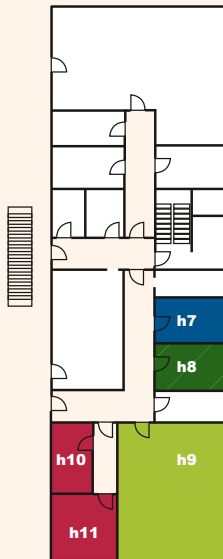


Floor Plan Advice and Counselling Center

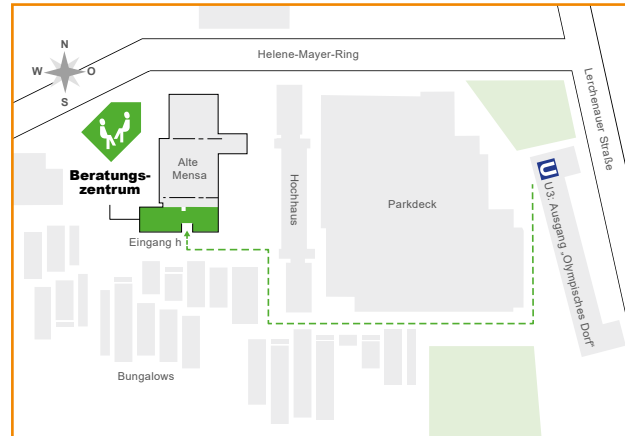
1st Floor



2nd Floor



Site Map



Advice and Counselling Center in the "Olympisches Dorf"

All consultation offered by the Student Union in Munich can be accessed through the advice and counselling center:

Alte Mensa
Helene-Mayer-Ring 9
Entrance h, 1st and 2nd floor
80809 Munich
U U3 Olympiazentrum



Studentenwerk
München

Munich Student Union

The Advice and Counselling Network



Our Advisory Network

Advice and Counselling Center in Munich
Olympisches Dorf, Alte Mensa

**General Advice and
and Social Counselling**

as well as

**Advice for Students
with a Disability and /
or Chronic Diseases**

**Advice for Students
Expecting or
With a Child**

Legal Advice

**Scholarship
Counselling**

General BAföG-Advice

Student Loan Advice

**Psychotherapeutic
and Psychosocial
Counselling**

as well as

**Advice Service
“Sexual Abuse,
Discrimination and
Violence”**

Study Coaching

**Courses offered by
the Advisory Network**

as well as

**Talks and
Information Events**

Advice and
Counselling Centre
in Rosenheim

**General Advice and
Social Counselling**

as well as

BAföG Information

BAföG Service-Desk

**Psychosocial
Counselling**

Advice and
Counselling
Center in Freising,
Weißenstephan
Campus

**General Advice and
Social Counselling**

as well as

BAföG Information

Legal Advice

**Psychotherapeutic
and Psychosocial
Counselling**

Up-to-date contact details and opening
hours can be found on our website at:
[www.studentenwerk-muenchen.de/
en/our-advisory-network](http://www.studentenwerk-muenchen.de/en/our-advisory-network)

